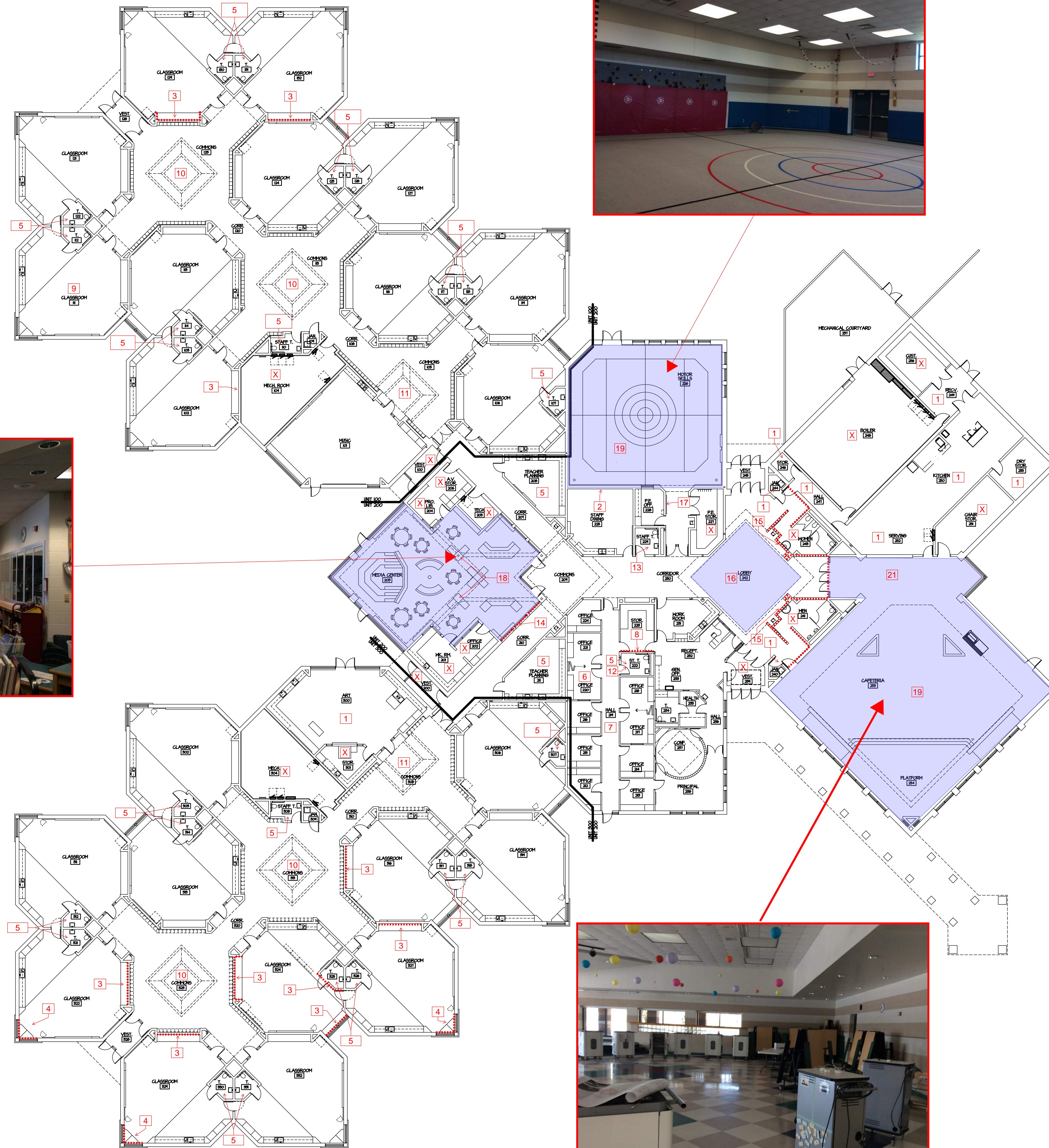


PROJECT DATA

FIRE SUPPRESSION:	EXISTING BUILDING IS SPRINKLED
CODE REGULATION:	2006 MICHIGAN BUILDING CODE 1997 NFPA 101 LIFE SAFETY CODE
MECHANICAL CODE:	2004 MICHIGAN MECHANICAL CODE
PLUMBING CODE:	2004 MICHIGAN PLUMBING CODE
ELECTRICAL CODE:	2004 NATIONAL ELECTRICAL CODE
BARRIER FREE DESIGN:	2006 MICHIGAN BUILDING CODE
OCCUPANCY:	(E) EDUCATIONAL
TYPE OF CONSTRUCTION:	EXISTING; MEC II-B
TOTAL BUILDING AREA:	EXISTING: 63,284 S.F.



- General Notes**
- A Coordinate work schedule on a week-by-week basis with Facilities Director, Brian Schuler.
  - B Anything our internal staff cannot paint from a 6 ft ladder was intended to be noted to be painted by contractor. Please clarify questionable areas with Facilities Director, Brian Schuler.
  - C Painter is responsible for minor caulking and wall repair. Masonry repairs shall be with grout and or caulk. Drywall and plaster may be caulk or spackle for minor holes. Appropriate fast set drywall repair compound shall be used for holes over 1/2" diameter. This includes filling holes from pinhole and up to 2" in diameter. Rethill sunken patches to level with adjacent surfaces. Lightly sand all repairs and prime as required, so they are not observable through finish paint. Major repairs will be by others. Coordinate major repairs with Facilities Director, Brian Schuler.
  - D Paint all walls and soffits with eggshell or semi-gloss finish paint to match the existing finish. "White" indicates the primary color used throughout the building.
  - E Where tackstrips are not removed from walls, protect and paint around tackstrips.
  - F If classrooms do not have a notation for a wall(s) to be painted the selected accent paint the entire room while.
  - G Paint all walls white unless specifically noted otherwise. If a color change is required, painter shall determine if spot priming or fill wall primer is required or not. Color matching to be chosen by the painter and approved by Facilities Director, Brian Schuler. Intent is to apply only one coat. However, painter shall apply as many coats as required to paint to cover.
  - H Do not paint any railings in hallways, stairwells, balconies, etc.

**Paint Notes**

**Paint Bidder will paint ONLY the BLUE highlighted areas.**

1-15, 17	Not applicable to bidder
16	Paint highbay areas as indicated in photo C2 and lower walls where not recently painted.
18	Do not paint the exposed brick columns.
19	The cafeteria, and the gym should follow the same painting pattern of the white and tan colors. Mask as required to achieve full coverage, straight, even lines.
20	Where overhead is exposed, clean all overhead ducts, joists, girders, roof deck, etc. as base bid. Provide alternate for prep and paint of these.
21	Only paint walls where not recently painted.

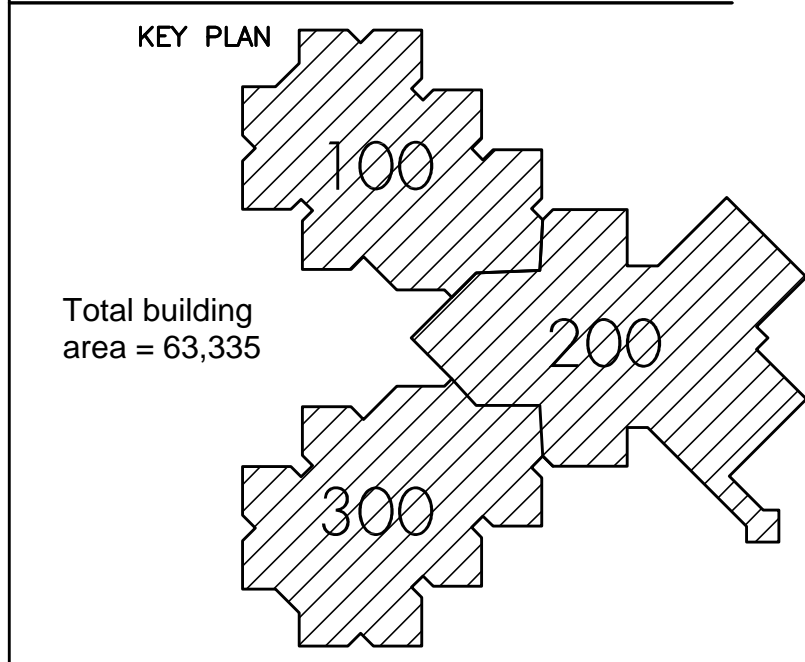
**PAINT SCHEDULE**

Color	Use
Sherwin Williams Pure White SW7005	Typical Wall Color & Gyp Board Ceiling (Epoxy Paint where needed.)
Sherwin Williams Balanced Beige SW7037	Anchor Elementary Accent Wall Stripes
Sherwin Williams competitive Clark + Kensington 26C-4 Everyday Life	Anchor Elementary Accent color "green"



ANCHOR ELEMENTARY SCHOOL

REVISIONS/REVIEW	DATE
Bids	6.3.2020



SCALE	NORTH
JOB NO.	
SHEET TITLE	CODE COMPOSITE PLAN
SHEET NO.	

AN-A0.1

COMPOSITE PLAN  
SCALE: 1/8" = 1'-0"

