

**General Notes**

A Coordinate work schedule on a week-by-week basis with Facilities Director, Brian Schuler.

B Anything our internal staff cannot paint from a 6 ft ladder was intended to be noted to be painted by contractor. Please clarify questionable areas with Facilities Director, Brian Schuler.

C Painter is responsible for minor caulking and wall repair. Masonry repairs shall be with grout and or caulk. Drywall and plaster may be caulk or spackle for minor holes. Appropriate fast set drywall repair compound shall be used for holes over 1/2" diameter. This includes filling holes from pinhole and up to 2" in diameter. Refill sunken patches to level with adjacent surfaces. Lightly sand all repairs and prime as required, so they are not observable through finish paint. Major repairs will be by others. Coordinate major repairs with Facilities Director, Brian Schuler.

D Paint all walls and soffits with eggshell or semi-gloss finish paint to match the existing finish. "White" indicates the primary color used throughout the building.

E Where tackstrips are not removed from walls, protect and paint around tackstrips.

F If classrooms do not have a notation for a wall(s) to be painted the selected accent paint the entire room white.

G Paint all walls white unless specifically noted otherwise. If a color change is required, painter shall determine if spot priming or fill wall primer is required or not. Color matching to be chosen by the painter and approved by Facilities Director, Brian Schuler. Intent is to apply only one coat. However, painter shall apply as many coats as required to paint to cover.

H Do not paint any railings in hallways, stairwells, balconies, etc.

**BATES PAINT NOTES**

Paint Hatched - will paint ONLY the BLUE highlighted areas.

X Do not paint this room.

1 Cafeteria - paint all block walls above brick and around door. Do NOT paint acoustical panels. Blow clean acoustical panels.

2-3 N/A

6 Gym - Paint all white, including blocks currently blue. Do not paint the glass block.

7, 19 N/A

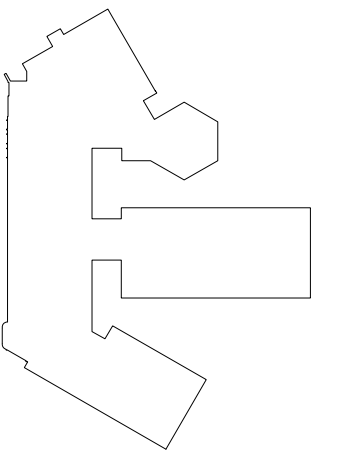
20 Where overhead is exposed, clean all overhead ducts, joists, girders, roof deck, etc. as base bid. Provide add alternate for prep and paint of these. Also, cleaning should include adjacent areas, window framing, light fixtures, etc.

PAINT SCHEDULE	
Color	Use
Sherwin Williams Pure White SW7005	Typical Wall Color & Gyp Board Ceiling (Epoxy Paint where needed.)

PROJECT TITLE  
**Bates School  
District Admin.  
Relocation**

**Dexter Community  
Schools**

DRAWING TITLE  
**First Level Composite  
Floor Plan**



ISSUE DATES

DATE	ISSUED FOR:

6.3.2020 Bids

DATE: ISSUED FOR:

DRAWN \_\_\_\_\_  
CHECKED \_\_\_\_\_  
APPROVED \_\_\_\_\_

PROJECT NO. \_\_\_\_\_

DRAWING NO.  
**BA-AC.1**