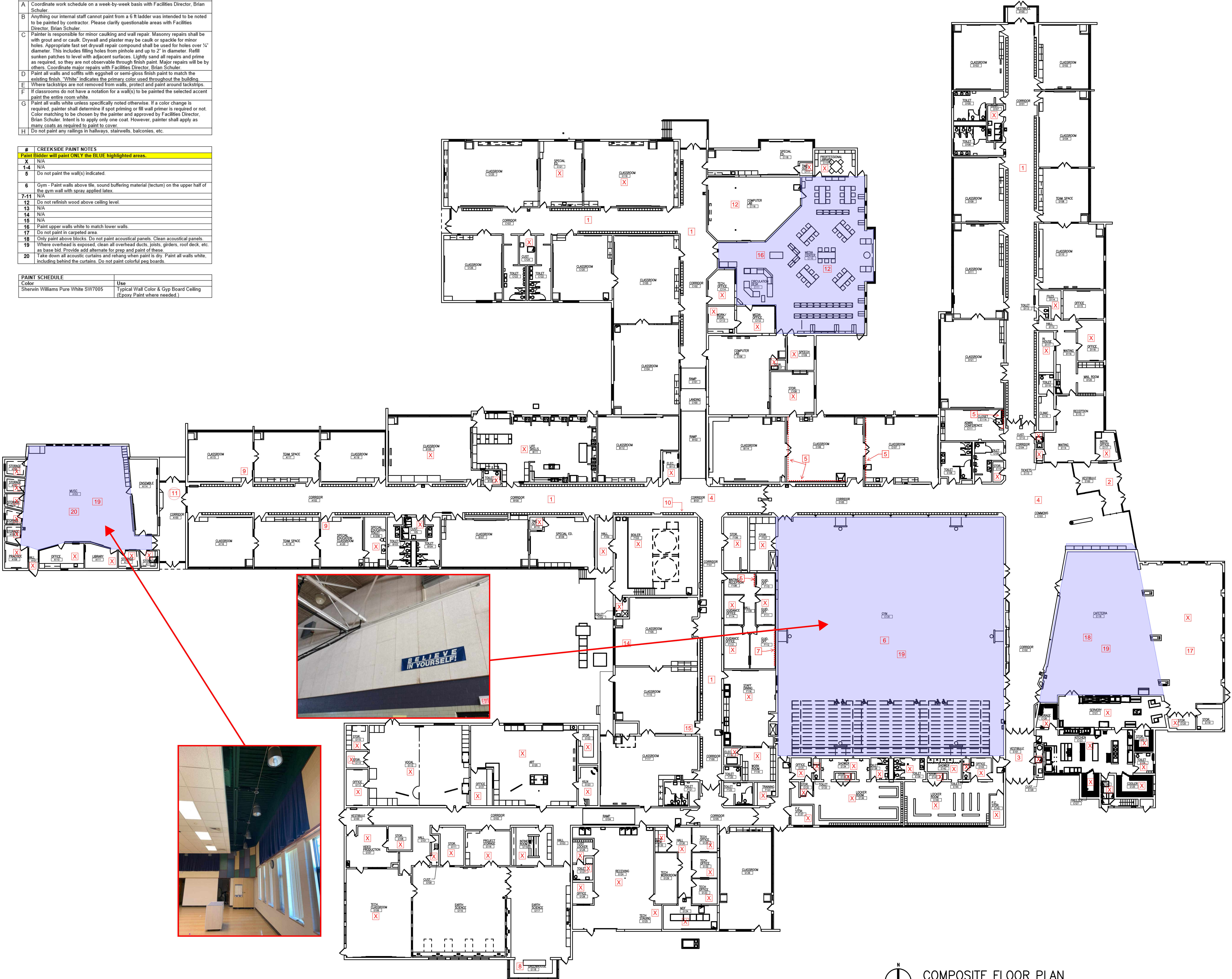


- General Notes**
- A Coordinate work schedule on a week-by-week basis with Facilities Director, Brian Schuler.
 - B Anything our internal staff cannot paint from a 6 ft ladder was intended to be noted to be painted by contractor. Please clarify questionable areas with Facilities Director, Brian Schuler.
 - C Painter is responsible for minor caulking and wall repair. Masonry repairs shall be with grout and or caulk. Drywall and plaster may be caulk or spackle for minor holes. Appropriate fast set drywall repair compound shall be used for holes over 1/2" diameter. This includes filling holes from pinhole and up to 2" in diameter. Refill sunken patches to level with adjacent surfaces. Lightly sand all repairs and prime as required, so they are not observable through finish paint. Major repairs will be by others. Coordinate major repairs with Facilities Director, Brian Schuler.
 - D Paint all walls and soffits with eggshell or semi-gloss finish paint to match the existing finish. "White" indicates the primary color used throughout the building.
 - E Where tackstrips are not removed from walls, protect and paint around tackstrips.
 - F If classrooms do not have a notation for a wall(s) to be painted the selected accent paint the entire room white.
 - G Paint all walls white unless specifically noted otherwise. If a color change is required, painter shall determine if spot priming or fill wall primer is required or not. Color matching to be chosen by the painter and approved by Facilities Director, Brian Schuler. Intent is to apply only one coat. However, painter shall apply as many coats as required to paint to cover.
 - H Do not paint any railings in hallways, stairwells, balconies, etc.

- # CREEKSIDE PAINT NOTES**
- Paint Bidder will paint ONLY the BLUE highlighted areas.
- 1 N/A
 - 14 N/A
 - 6 Do not paint the wall(s) indicated.
 - 6 Gym - Paint walls above tile, sound buffering material (tectum) on the upper half of the gym wall with spray applied latex.
 - 7-11 N/A
 - 12 Do not refinish wood above ceiling level
 - 13 N/A
 - 14 N/A
 - 15 N/A
 - 16 Paint upper walls white to match lower walls.
 - 17 Do not paint in carpeted area.
 - 18 Only paint above blocks. Do not paint acoustical panels. Clean acoustical panels.
 - 19 Where overhead is exposed, clean all overhead ducts, joists, girders, roof deck, etc. as base bid. Provide add alternate for prep and paint of these.
 - 20 Take down all acoustic curtains and rehanging when paint is dry. Paint all walls white, including behind the curtains. Do not paint colorful peg boards.

Color	Use
Shervin Williams Pure White SW7005	Typical Wall Color & Gyp Board Ceiling (Epoxy Paint where needed.)



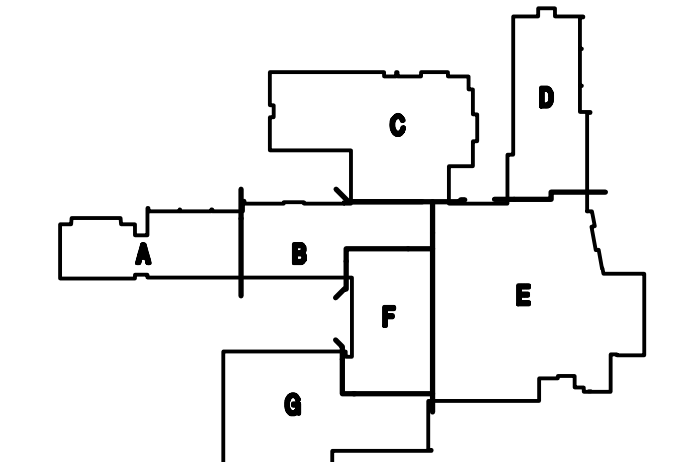
Creekside Intermediate School

Total Square Footage: 128,540

PROJECT TITLE
Creekside Intermediate

Dexter Community Schools

DRAWING TITLE
Composite Floor Plan



KEY PLAN

ISSUE DATES

6.3.2020 Bids
DATE ISSUED FOR:

DRAWN
CHECKED
APPROVED

PROJECT NO.

DRAWING NO.
CR-AC.1

COMPOSITE FLOOR PLAN
SCALE: 1/16" = 1'-0"