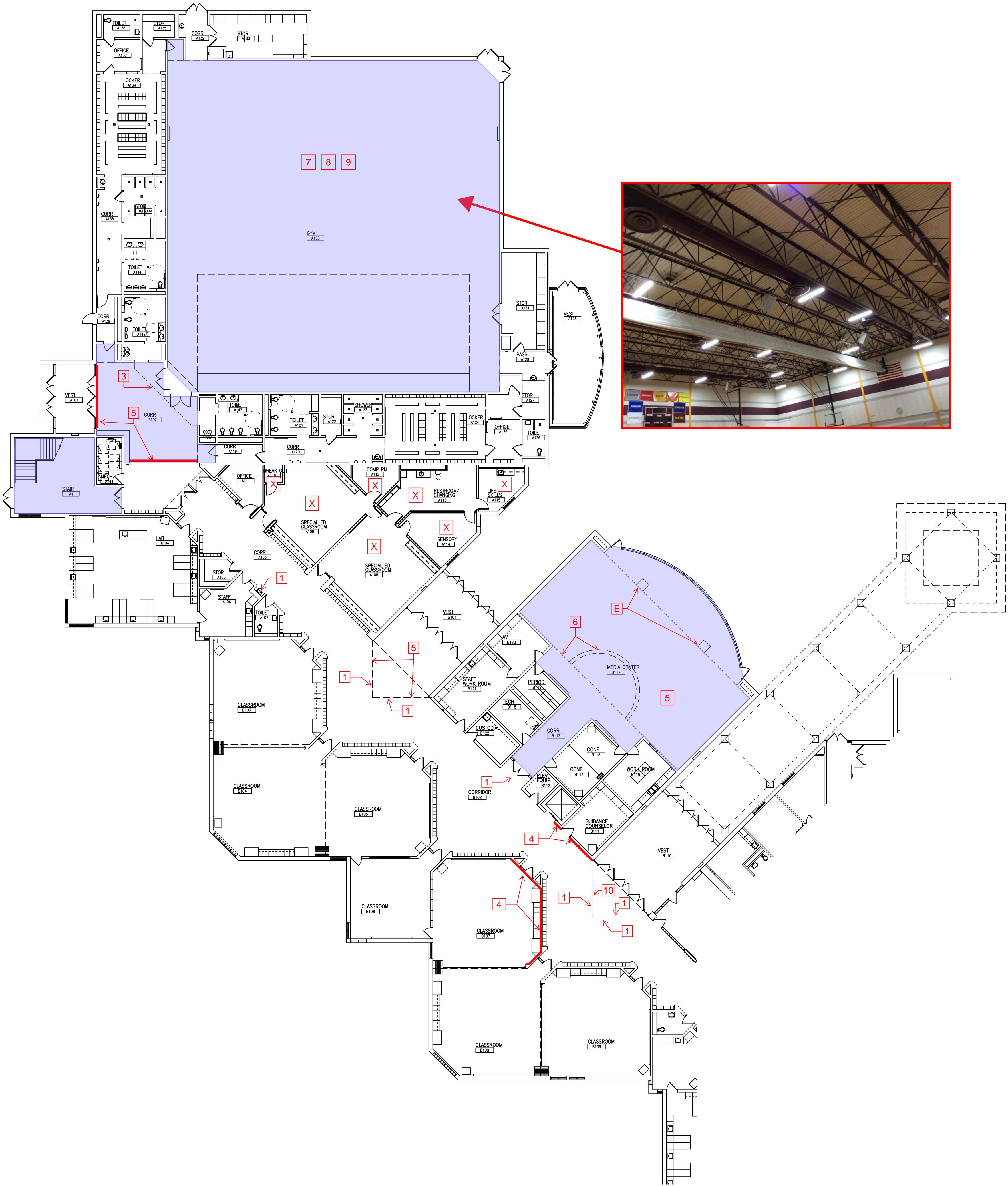
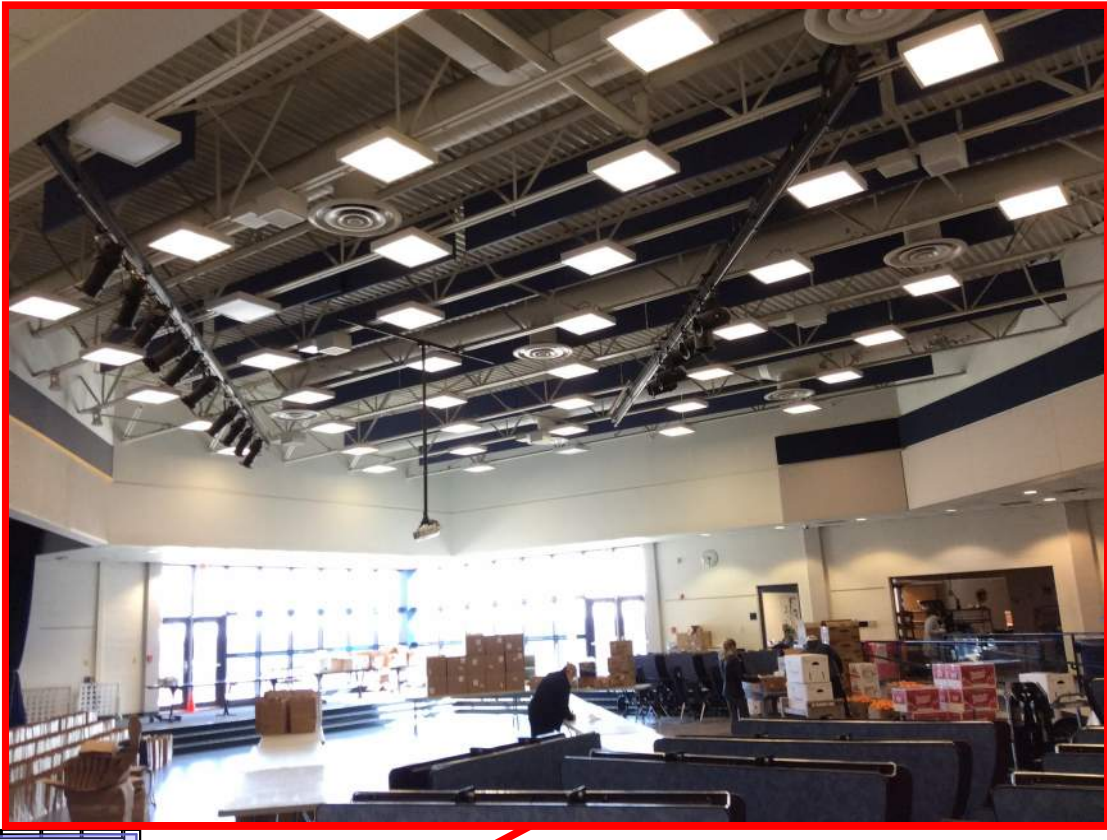


Mill Creek Middle School

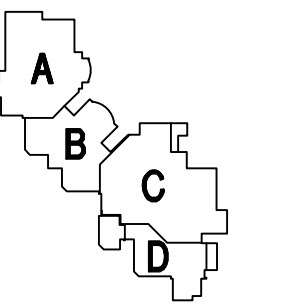
Total Square Footage:
118,725



PROJECT TITLE
Mill Creek Middle School

Dexter Community Schools

DRAWING TITLE
Composite First Level Plan



KEY PLAN

ISSUE DATES

6.3.2020 Bids
DATE ISSUED FOR:

DRAWN
CHECKED
APPROVED

PROJECT NO.

DRAWING NO.
MC-AC.1

- General Notes**
- A Coordinate work schedule on a week-by-week basis with Facilities Director, Brian Schuler.
 - B Anything our internal staff cannot paint from a 6 ft ladder was intended to be noted to be painted by contractor. Please clarify questionable areas with Facilities Director, Brian Schuler.
 - C Painter is responsible for minor caulking and wall repair. Masonry repairs shall be with grout and or caulk. Drywall and plaster may be caulk or spackle for minor holes. Appropriate fast set drywall repair compound shall be used for holes over 1/4" diameter. This includes filling holes from pithole and up to 2" in diameter. Refill sunken patches to level with adjacent surfaces. Lightly sand all repairs and prime as required, so they are not observable through finish paint. Major repairs will be by others. Coordinate major repairs with Facilities Director, Brian Schuler.
 - D Paint all walls and soffits with eggshell or semi-gloss finish paint to match the existing finish. "White" indicates the primary color used throughout the building.
 - E Where tackstrips are not removed from walls, protect and paint around tackstrips.
 - F If classrooms do not have a notation for a wall(s) to be painted the selected accent paint the entire room white.
 - G Paint all walls white unless specifically noted otherwise. If a color change is required, painter shall determine if spot priming or fill wall primer is required or not. Color matching to be chosen by the painter and approved by Facilities Director, Brian Schuler. Intent is to apply only one coat. However, painter shall apply as many coats as required to paint to cover.
 - H Do not paint any railings in hallways, stairwells, balconies, etc.

# MILL CREEK PAINT NOTES	
Paint Bidder will paint ONLY the BLUE highlighted areas.	
X	Do not paint this room.
1	Save decal/art. Paint a border box (matching maroon color) around the word/art.
2	Save art. DO NOT paint a border box around the art.
3	Do not paint the upper wall with mural.
4	N/A
5	Clean acoustical wall panels.
6	Library – Do not color match accent colors. Paint all white, except wood trim.
7	Gym – Repaint maroon stripe. All other colors cover with white.
8	Paint sound buffering material (tectum) with spray applied latex.
9	Where overhead is exposed, clean all overhead ducts, joints, girders, roof deck, etc. as base bid. Provide add alternate for prep and paint of these.
10	Paint over art on this wall. Ensure cleaning/coating/coverage to hide
11	N/A
12	N/A
13	Paint all walls white.
14	Stairwell – some areas have been painted recently. Paint only those areas that need it.
PAINT COLOR SCHEDULE	
Sherwin Williams Pure White SW7005	Typical Wall Color & Gyp Board Ceiling
Sherwin Williams Deep Maroon SW 0072	"Dexter Maroon"