

General Notes	
A	Coordinate work schedule on a week-by-week basis with Facilities Director, Brian Schuler.
B	Anything our internal staff cannot paint from a 6 ft ladder was intended to be noted to be painted by contractor. Please clarify questionable areas with Facilities Director, Brian Schuler.
C	Painter is responsible for minor caulking and wall repair. Masonry repairs shall be with grout and or caulk. Drywall and plaster may be caulk or spackle for minor holes. Appropriate fast set drywall repair compound shall be used for holes over 1/2" diameter. This includes filling holes from pinhole and up to 2" in diameter. Refill sunken patches to level with adjacent surfaces. Lightly sand all repairs and prime as required, so they are not observable through finish paint. Major repairs will be by others. Coordinate major repairs with Facilities Director, Brian Schuler.
D	Paint all walls and soffits with eggshell or semi-gloss finish paint to match the existing finish. "White" indicates the primary color used throughout the building.
E	Where tackstrips are not removed from walls, protect and paint around tackstrips.
F	If classrooms do not have a notation for a wall(s) to be painted the selected accent paint the entire room white.
G	Paint all walls white unless specifically noted otherwise. If a color change is required, painter shall determine if spot priming or fill wall primer is required or not. Color matching to be chosen by the painter and approved by Facilities Director, Brian Schuler. Intent is to apply only one coat. However, painter shall apply as many coats as required to paint to cover.
H	Do not paint any railings in hallways, stairwells, balconies, etc.

WYLIE PAINT NOTES	
Paint bidder will paint ONLY the BLUE highlighted areas.	
X	N/A
1-6	N/A
7	Paint above solid blue blocks only. Paint all white. Paint over blue/tan alternating blocks in white.
8	Do not paint the climbing rock wall area.
9-19	N/A
20	Clean fabric soundboards on upper three walls. Clean open roof deck areas. Provide alternate for painting.
21	N/A
22	Clean west upper wall that are drywall/fiber and vents. Paint upper wall to match color of tectum panels on adjacent three upper walls.
23	Paint white upper walls only.
24	Paint all walls white in stage area.

PAINT SCHEDULE	
Color	Use
Sherwin Williams Pure White SW7005	Typical Wall Color & Gyp Board Ceiling (Epoxy Paint where needed.)



COMPOSITE FIRST LEVEL PLAN  
SCALE: 1/16" = 1'-0"

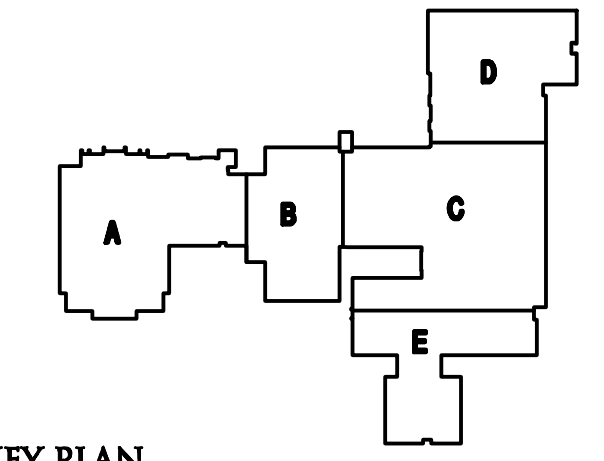
Wylie Elementary School

Total Square Footage: 83,732

PROJECT TITLE  
**Wylie Elementary School**

Dexter Community Schools

DRAWING TITLE  
**Composite First Level Plan**



KEY PLAN

ISSUE DATES


6.3.2020 Bids  
DATE ISSUED FOR:

DRAWN  
CHECKED  
APPROVED

PROJECT NO.

DRAWING NO.  
**WY-AC.1**